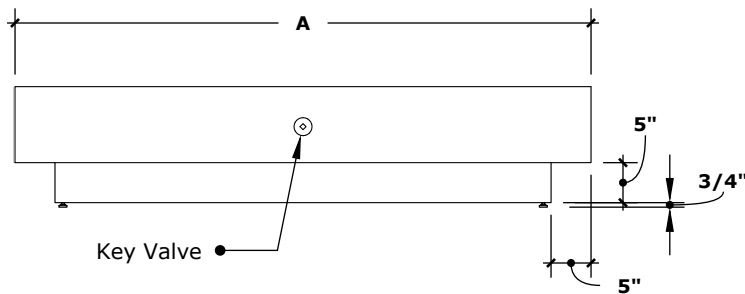


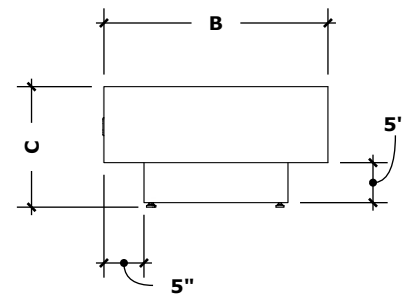
# CORONADO FIRE PIT

Copper, Corten Steel, Stainless Steel, Powder Coated Steel



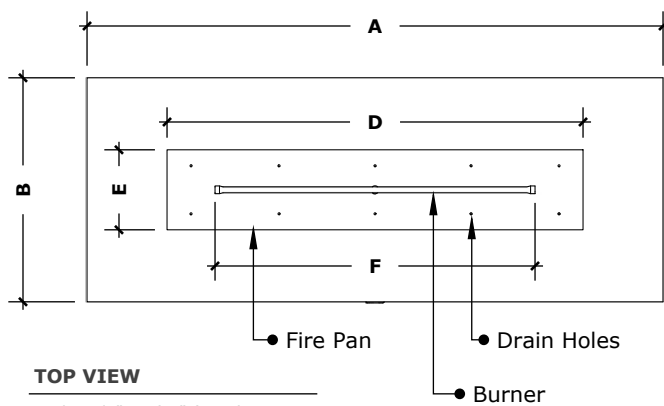
**FRONT VIEW**

scale: 1/2" = 1'-0" (1:24)



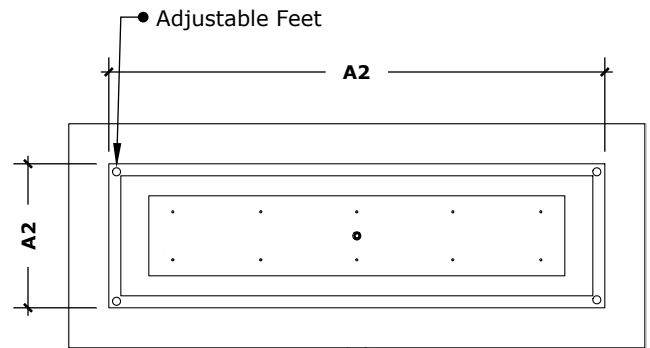
**RIGHT VIEW**

scale: 1/2" = 1'-0" (1:24)



**TOP VIEW**

scale: 1/2" = 1'-0" (1:24)



**UNDERSIDE VIEW**

scale: 1/2" = 1'-0" (1:24)

HAMMERED COPPER	CORTEN STEEL	STAINLESS STEEL	POWDER COAT STEEL	A	A2	B	B2	C	D	E	F	BTU
OPT-CORCPR48	OPT-CORCS48	OPT-CORSS48	OPT-CORPC48	48"	38"	28"	18"	15"	30"	10"	24"	45,000
OPT-CORCPR60	OPT-CORCS60	OPT-CORSS60	OPT-CORPC60	60"	50"	28"	18"	15"	42"	10"	30"	65,000
OPT-CORCPR72	OPT-CORCS72	OPT-CORSS72	OPT-CORPC72	72"	62"	28"	18"	15"	54"	10"	42"	80,000
OPT-CORCPR84	OPT-CORCS84	OPT-CORSS84	OPT-CORPC84	84"	74"	28"	18"	15"	66"	10"	54"	110,000
OPT-CORCPR96	OPT-CORCS96	OPT-CORSS96	OPT-CORPC96	96"	86"	28"	18"	15"	78"	10"	66"	135,000

Fire Pit Material: Multiple  
 Pan Material: 304 Stainless Steel  
 Burner Material: 304 Stainless Steel

**Match Lit Unit Includes:** Pan, Burner, Gas Orifice, Gas Hoses, Key Valve, Key,

**110v Ignition Unit Includes:** Pan, Burner, Gas Orifice, Gas Hoses, Key Valve, Key, Plug & Play Electronic Valve, Pilot Igniter.



**110V ELECTRONIC IGNITION CERTIFICATION**  
 ANSI Z21.97-(2017) / CSA 2.41-(2017)